

## Fourier Analysis of Maxillary Dental Arch Forms

Michiko Nakatsuka, Tohru Tsujibayashi<sup>1</sup>, Shunji Kumabe,  
Seong-Suk Jue<sup>2</sup>, Je-Won Shin<sup>2</sup>, Yasutomo Iwai-Liao

*Department of Oral Anatomy, Osaka Dental University, Osaka, Japan,*

<sup>1</sup>*Department of Physics, Osaka Dental University, Osaka, Japan,*

<sup>2</sup>*Department of Oral Anatomy, School of Dentistry, Kyung Hee University, Seoul, Korea*

---

**Abstract :** Our previous principal component analysis conducting on reference points, lines and angles, and a vector-developed polar coordinate system has elucidated that the components of eigenvectors had positive relationships in the curvature of anterior teeth segment, between the protrusion of canines and degree of arch roundness, and in the length-to-width ratio of 62 maxillary dentitions, which were preliminarily classified with reference to the conventional Thompson's morphological descriptions for dental arch forms.

In the present study on morphological characters of the maxillary dentitions, we conducted a Fourier analysis on the previously obtained data.

We observed that the amplitude of 2<sup>nd</sup>, 3<sup>rd</sup> and 4<sup>th</sup> Fourier harmonics were closely correlated with the length-to-width ratio, curvature of the anterior teeth segment, and the curvilinear contour of maxillary dental arches. In addition, the relationships between previously estimated data and the constant value and the amplitude of the Fourier series were examined by analysis of correlation coefficients ( $p < 0.01$ ).

The results of the present study suggest that the morphology of maxillary dentitions consists of three essentials-the length-to-width ratio, the curvature of anterior teeth and the curvilinear contour of dental arches.

---

**Key words :** Fourier analysis, Maxillary dental arch

### Introduction

For clinical purposes, dental arch forms are expediently classified as square, round-square, round and round V-shaped arches according to Thompson's descriptive morphological study (Thompson and Dewey 1915). The widely used conventional classification was mainly depending on subjectively visual examination that defines dental arch as upsilon, elliptique, parabolique and hyperbolique forms (Okumura 1924,

Yamazaki 1934). Some objective methods using mathematical evaluation and quantitative analyses were developed to classify the dental arch forms by translating the measuring data of various morphological elements recorded on plaster casts into algebraical functions (Sakai 1955, Katayama 1958). The latter study has also verified hyperbolic-, parabolic- and elliptic-shaped dental arches by a quadratic equation analysis (Biggerstaff 1972). Another study further superimposed measuring data developed from reference points designated on dental arches with catenary, conic section, elliptic function and fourth polynomial arches, and suggested that the fourth polynomial for-

---

Correspondence to : Seong-Suk Jue (Department of Oral Anatomy, School of Dentistry, Kyung Hee University)  
E-mail : sjue@khu.ac.kr

mula is mostly acceptable for analysing dental arch forms (Iwabayashi 1980). Although various functions observed by the above methods were useful for mathematical explanations, but seemed difficult to ascertain and compare distinguishing characters of different dental arch types.

Morphological studies using Fourier analysis has been proposed to evaluate the mandibular fossa (Ohba et al. 1976, Kashiwagi 1977), tooth (Ozaki et al. 1977), inferior border of mandible (Soma and Hatate 1980), the dental arch (Kasai et al. 1977, Sekimoto 1983, Sekikawa 1986, Tsuji et al. 1986, Fujisawa 1988, Sekimoto et al. 1988, Lestrel et al. 2004) and positional relationships between the palatine and dental arch statistically. In the present study, we try to evaluate dental arch forms with Fourier analysis, because 1) it can get hold of, estimate and compare the numerical information representing sizes and forms of dental arches, and 2) by intersection of Fourier arithmetical (geometrical) series with certain harmonics, coefficients are reproducible for further statistical analysis. The present study aims at the dissolution of relationships of essential factors that affect maxillary dental arch forms by using Fourier analysis on estimated items developed on maxillary dentitions in our previous study (Nakatsuka et al. 2004).

## Materials and Methods

### 1. Materials

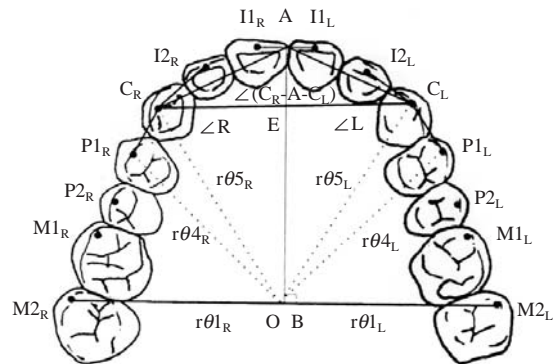
The study was performed following the Declaration of Helsinki Ethical Principles for Medical Research (1964). The protocol (No. 05507: Morphological Analysis of dental arches) was approved by the Ethic Review Board of Osaka Dental University. In the study, 396 sets of paired maxillary and mandibular dental casts of young adult students (18 to 26 years old; male: 257, female: 139) at Osaka Dental University were prepared to have a total height of 60 mm with the oc-

clusal plane adjusted to be at a height of 30 mm from the mandibular cast base (Nakatsuka et al. 2004). We selected 62 sets (male: 36; female: 26) with normal dentition and occlusion, and the maxillary dentitions of the standardised specimens were preliminarily classified as square, round-square, round and round V-shaped arches.

### 2. Methods

#### 1) Designation of references and lines for examination

We designated the midpoints of the incisor edge ( $I1_R, I1_L, I2_R$  &  $I2_L$ ), the summits of the cuspids ( $C_R$  &  $C_L$ ), the buccal cusps of premolars ( $P1_R, P1_L, P2_R$  &  $P2_L$ ) and the mesial buccal cusps of the first and second molars ( $M1_R, M1_L, M2_R$  &  $M2_L$ ) to be the main reference points. The midpoint of line ( $I1_R-I1_L$ ) was defined a reference point A. From A, let a vertical line intersected line ( $M2_R-M2_L$ ) at reference point B. The line (A-B) intersected line ( $C_R-C_L$ ) at reference point E. Point O (origin, pole) was the reference midpoint at the line ( $M2_R-M2_L$ ) (original line), and was designated to study the relationships between right and left radius



**Fig. 1.** Reference points, lines, and angles. A: the midpoint of line ( $I1_R-I1_L$ ), B: let a vertical line intersected line ( $M2_R-M2_L$ ) from A, E: the line (A-B) intersected line ( $C_R-C_L$ ), O (origin, pole): the midpoint at the line ( $M2_R-M2_L$ ) (original line),  $r\theta_n$  ( $n=1, \dots, 7$ )<sub>R&L</sub> ( $\theta$ =angles between line (O-reference points) and the original line ( $M2_R-M2_L$ )).

vectors  $r\theta_n$  ( $n=1, \dots, 7$ )<sub>R&L</sub> ( $\theta$ =angles between line (O-reference points) and the original line (M2<sub>R</sub>-M2<sub>L</sub>)) by developing a spherical (polar) coordinate system (Sekikawa 1986, Nakatsuka et al. 2004) (Fig. 1).

### 2) Photography of the dental casts

A Nikon AD100 digital camera fitted with an AF MICRO Nikkor 70 ~ 180 mm, 1 : 4.5 ~ 5.6 D lens (Nikon, Tokyo, Japan) was set up on a King L4 Copy Stand (Asanuma, Tokyo, Japan). The axis of the lens was aligned vertically to the occlusal plane (standard plane) of mandibular casts (focusing distance=70 mm,  $f=29$ ), and the distance between the lens and standard plane was adjusted to 310 mm so that the photographs keeping in equal proportion with the casts. The digital data were processed with Adobe Photoshop CS (Adobe System; Cal., USA) and Adobe Page Maker (ver. 6.5J, Adobe System) on a Dell Optiplex GX200 computer (OS: Microsoft Windows XP professional; DELL Japan, Kanagawa, Japan), and the equal-proportional images of plaster casts were printed out by using an Epson LP-8300C colour printer (Epson, Nagano, Japan).

### 3) Establishment and development of reference items

By connecting reference points printed on photos, we established 6 items for differentiating maxillary dental arches: ①  $\angle R + \angle L$ , ②  $(A-B)/(C_R-C_L)$ , ③  $180^\circ - \angle(C_R-A-C_L)$ , ④  $(A-E)/(C_R-C_L)$ , ⑤  $(A-B)/(M2_R-M2_L)$  and ⑥  $(r\theta_5 - r\theta_4)_R + (r\theta_5 - r\theta_4)_L$  (Fig. 1). The definition of items has been described in our previous study (Nakatsuka et al. 2004).

### 4) Fourier series

The Fourier series is a system that its optional periodic functions of  $2\pi$  periodicity can be represented by the composition of trigonometric functions with different periodicity and amplitude (Kawata 1985, Funakoshi 1989, Oishi 1989). The present study was evaluated by Origin (R) 6.1J (Origin Lab Co, MA, USA)

with the following formula:

$$Y(\theta_i) = a_0 + \sum (a_i * \cos \theta_i + b_i * \sin \theta_i) \quad (i=1, 2, \dots, 7)$$

$2 a_0$ : constant value; representing the dental arch size (Sekimoto 1983, Sekikawa 1986, Tsuji et al. 1986, Sekimoto et al. 1988, Kasai 1997).

$a_i, b_i$ : Fourier coefficients.

$\sqrt{a_i^2 + b_i^2}$ : the associated wave of cosine (cos) and sine (sin) waves with a same harmonic: amplitude; representing the dental arch form.

The  $2 a_0$  is also an area obtained by dividing the  $Y(\theta_i)$  graph with a periodicity T (Sekimoto 1983, Kawata 1985, Sekikawa 1986, Tsuji et al. 1986, Sekimoto et al. 1988, Funakoshi 1989, Oishi 1989, Kasai 1997). On the other hand,  $a_i$  and  $b_i$  are Fourier coefficients of cos and sin waves, respectively,  $\sqrt{a_i^2 + b_i^2}$  and is developed to indicate the amplitude obtained by combining the cos and sin waves of a same harmonic. It also expresses the size implicating the combined wave, that we can evaluate how the weight (contribution) affecting the wave. Standardization of the constant value  $2 a_0$  has been proposed for correction of individual differences, while it increases the risk of error during processing the finite term in a Fourier series; in the present study, we did not standardize the constant value  $2 a_0$  (Soma and hatate 1980, Sekimoto 1983, Sekikawa 1986).

We defined 14 reference points on a maxillary cast and let the wave went up-and-down less than 7 times in a period (Sekikawa 1986). The present Fourier analysis defined and investigated  $i=1, 2, \dots, 7$  ( $i=1$  represented the wave of the 1<sup>st</sup> harmonic and so on). The morphological characters of the constant value  $2 a_0$  and amplitudes  $\sqrt{a_i^2 + b_i^2}$  of the associated waves were estimated as followings:

1) Comparison of the contribution and cumulative contribution expressed in different arch forms by studying amplitude of different harmonics.

2) Comparison of the constant value and the ampli-

tude of different arch forms.

One-factor ANOVA ( $p < 0.01$ ) and Kruskal Wallis test ( $p < 0.01$ ) for non-homogenous dispersive data were processed using Excel Statistics 2000 for Windows (Community Information Services, Tokyo, Japan). Significant data were assessed by Scheffe's test for *post hoc*.

3) Comparison of measured data with the constant value and amplitude.

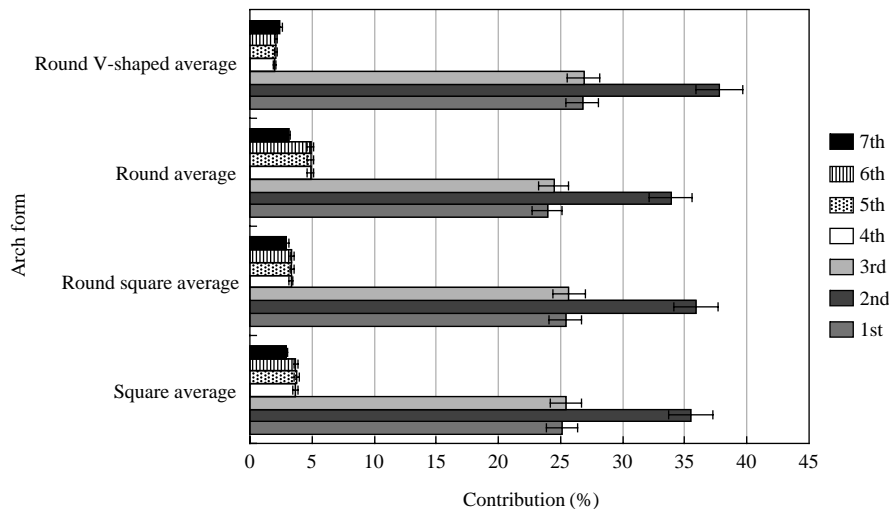
One-factor ANOVA ( $p < 0.01$ ) and Kruskal Wallis test ( $p < 0.01$ ) for non-homogenous dispersive data were processed using Excel Statistics 2000 for Win-

dows (Community Information Services, Tokyo, Japan). Significant data were assessed by Scheffe's test for *post hoc*. Furthermore, correlation coefficient analysis ( $p < 0.01$ ) on the relationships between the present Fourier analysis and the results obtained in our previous study was also performed (Aoki 1989, Funakoshi 1989, Endo and Yamamoto 1992, Kan 1993, Agata, 1997, Uchida 1997, Katahira 1999, Okuda 1999, Nakatsuka et al. 2004).

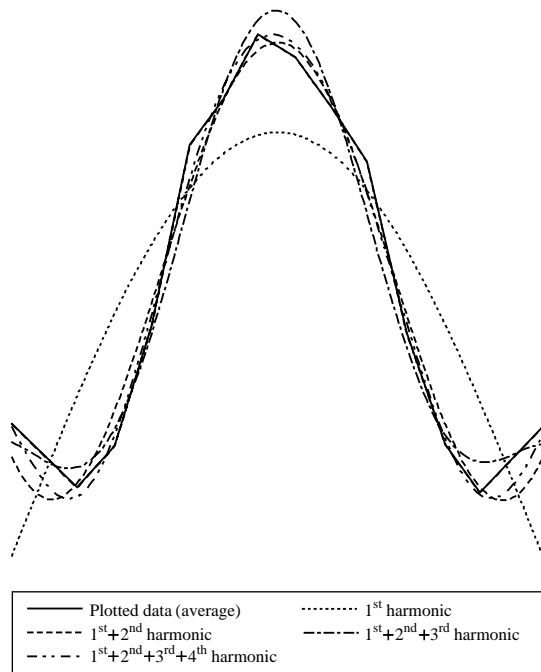
In this study, we in particular estimated the recurrence in percentage (recurrence %) by superimposing the amplitude of different harmonics with the summat-

**Table 1.** Contributions and cumulative contributions of harmonics developed from means amplitudes of different dental arch types (%)

Arch form	Contribution	Harmonic						
		1 <sup>st</sup>	2 <sup>nd</sup>	3 <sup>rd</sup>	4 <sup>th</sup>	5 <sup>th</sup>	6 <sup>th</sup>	7 <sup>th</sup>
Square (13 cases)	Contribution	25.07	35.46	25.40	3.68	3.76	3.71	2.92
	Cumulative contribution	25.07	60.53	85.93	89.61	93.37	97.08	100.00
Round square (36 cases)	Contribution	25.39	35.90	25.68	33.38	3.39	3.36	2.95
	Cumulative contribution	25.39	61.29	86.97	90.31	93.69	97.05	100.00
Round (3 cases)	Contribution	23.95	33.87	24.46	4.87	4.89	4.87	3.09
	Cumulative contribution	23.95	57.82	82.28	87.15	92.04	96.91	100.00
Round V-shaped (10 cases)	Contribution	26.74	37.82	26.86	2.00	2.06	2.06	2.46
	Cumulative contribution	26.74	64.56	91.42	93.42	95.48	97.54	100.00



**Fig. 2.** Contributions of the harmonics developed from the average of each arch type.



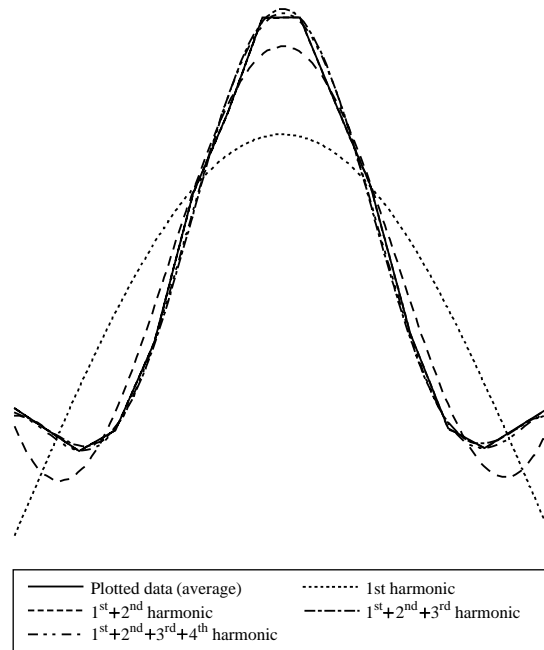
**Fig. 3.** Reproduction of the square dental arch with a Fourier series. Original data (mean): solid line, 1<sup>st</sup> harmonic: dotted line, 1<sup>st</sup>+2<sup>nd</sup> harmonics: broken line, 1<sup>st</sup>+2<sup>nd</sup>+3<sup>rd</sup> harmonics: 1-dot chained line, 1<sup>st</sup>+2<sup>nd</sup>+3<sup>rd</sup>+4<sup>th</sup> harmonics: 2-dot chained line

ed amplitudes  $\sqrt{ai^2+bi^2}$  (from 1<sup>st</sup> to 7<sup>th</sup> harmonics), and defined the contribution for each dental arch type. The cumulative contribution was the contribution developed from accumulation of the amplitudes from 1<sup>st</sup> to 7<sup>th</sup> harmonics, and thus reproduced arch type forms with high recurrence not less than 90% (Sekikawa 1986).

## Results

### 1. Contribution and cumulative contribution of dental arch forms

All of the four types (square, round-square, round and round V-shaped arches) showed approximately

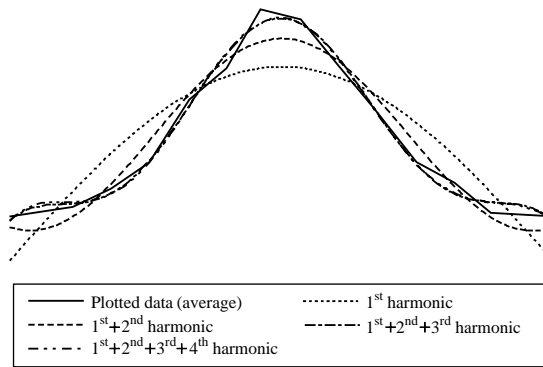


**Fig. 4.** Reproduction of the round-square dental arch with a Fourier series.

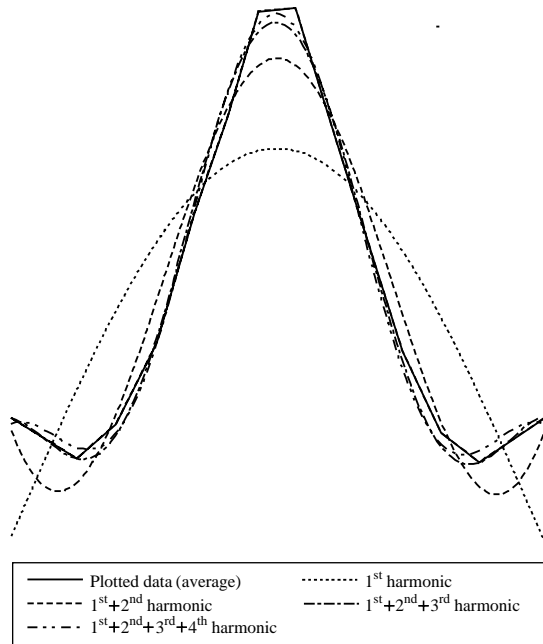
90% of cumulative contribution; we observed higher cumulative contribution percentage in 1<sup>st</sup> to 3<sup>rd</sup> harmonics, and the 2<sup>nd</sup> harmonic had the highest contribution in all arch forms (Table 1, Fig. 2). The 4<sup>th</sup> harmonics of square and round arches, 5<sup>th</sup> harmonic of round arches and 3<sup>rd</sup> harmonic of round V-shaped arches had cumulative contribution nearly at 90% high.

### 2. Average morphology of each dental arch form

We calculated constant values and the mean of Fourier coefficients of 1<sup>st</sup>- to 4<sup>th</sup>-harmonic for drawing average curves of maxillary arches (solid line: mean of original data, dotted line: 1<sup>st</sup> harmonic, broken line: 1<sup>st</sup>+2<sup>nd</sup> harmonics, 1-dot chained line: 1<sup>st</sup>+2<sup>nd</sup>+3<sup>rd</sup> harmonics, 2-dot chained line: 1<sup>st</sup>+2<sup>nd</sup>+3<sup>rd</sup>+4<sup>th</sup> harmonics; Figs. 3-6). The 1<sup>st</sup> harmonic curves of all arch forms rather deviated from original data, while the

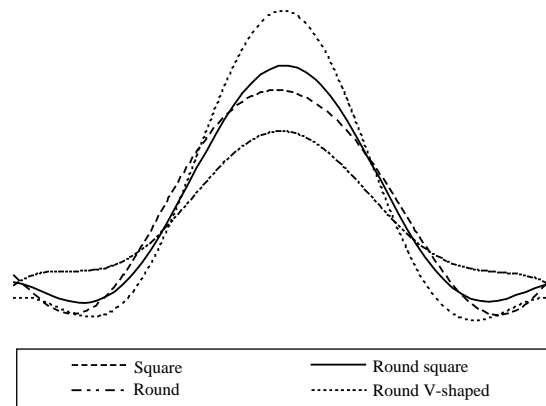


**Fig. 5.** Reproduction of the round dental arch with a Fourier series.



**Fig. 6.** Reproduction of the round V-shaped dental arch with a Fourier series.

$1^{st}+2^{nd}$ -harmonic curves overlapped with the original data in particular at the molar segments; the findings indicated that there were certain characters of each arch form. We observed that the curves for  $1^{st}+2^{nd}+3^{rd}$ -harmonic waves increased in adaptation at the anterior



**Fig. 7.** Superimposition of average dental arch forms. square arch: broken line, round-square arch: solid line, round arch: 2-dot chained line, round V-shaped arch: dotted line

teeth region, while  $1^{st}+2^{nd}+3^{rd}+4^{th}$ -harmonic curves reproduced different arch forms with the original data. In accordance with a previous study, we also observed that the mid-portion usually adapted more than the ends of combined-harmonic curves with original-data curves (Tsuji et al. 1986). The results suggested that the  $1^{st}+2^{nd}+3^{rd}$ - and  $1^{st}+2^{nd}+3^{rd}+4^{th}$ -harmonic curves were nearly completely fitted with the original data of all arch forms.

### 3. Superimposition of average dental arch forms

We superimposed the average forms of maxillary dental arches (the  $1^{st}+2^{nd}+3^{rd}+4^{th}$  curve of each arch form; broken line: square arch, solid line: round-square, 2-dot chained line: round arch, dotted line: round V-shaped arch), and found that square arches had a distinct projection of the cuspid regions and round V-shaped arches had a pointing anterior-teeth region. Two endings (molar regions) of round arches showed an increase of values, but the other arch types showed a decrease followed by an increase of the values at the molar regions.

**Table 2.** Estimation of amplitudes developed from the constant value and harmonics.

	Constant value		Amplitudes		
	Value	Amplitude	Amplitude	Amplitude	Amplitude
p	0.3126	0.9683	**	**	**

\*\* : p < 0.0001

**Table 3.** Estimation of the 2<sup>nd</sup> harmonic of different arch types (Scheffe's test).

	Square	Round square	Round
Round square	0.0755		
Round	0.4565	0.9941	
Round V-shaped	**	**	0.3338

\*\* : p < 0.01

#### 4. Comparison of the constant value and amplitude between different arch types

Significant differences of the constant value ( $2a_0$ ; representing the arch size) and amplitudes of the 1<sup>st</sup> harmonic (representing the arch forms) were not demonstrated (Table 2). Scheffe's test was performed for estimation of the differences between amplitudes of the 2<sup>nd</sup>, 3<sup>rd</sup> and 4<sup>th</sup> harmonic that were supposed to represent arch forms. Significant differences for different arch forms of each harmonic were summarized as the following (Table 3-5):

- 1) The 2<sup>nd</sup> harmonic: significantly differed between round V-shaped and either square or round-square arch.
- 2) The 3<sup>rd</sup> harmonic: significantly differed between square arch and other types of dental arch.
- 3) The 4<sup>th</sup> harmonic: significantly differed between square and either round-square or round arch.

#### 5. Comparison of estimated data with the constant value and the amplitude

Relationships between estimated data obtained in our previous study (Nakatsuka et al. 2004) and the constant value and amplitude were represented by

**Table 4.** Estimation of the 3<sup>rd</sup> harmonic of different arch types (Scheffe's test).

	Square	Round square	Round
Round square	**		
Round	**	0.0966	
Round V-shaped	**	0.2636	0.6680

\*\* : p < 0.01

**Table 5.** Estimation of the 4<sup>th</sup> harmonic of different arch types (Scheffe's test).

	Square	Round square	Round
Round square	**		
Round	**	0.4892	
Round V-shaped	0.0656	0.7138	0.2456

\*\* : p < 0.01

correlation coefficients ( $p < 0.01$ ; Table 6). A distinctly positive correlation of the constant value with the anterior-teeth and dental arch width, and a low but positive correlation with the dental length were observed. In the 1<sup>st</sup> harmonic, a significantly positive correlation between the dental-arch length and anterior-teeth width was found. The 2<sup>nd</sup> harmonic was highly and positively correlated with the arch width, but was highly and negatively correlated with the anterior-teeth curvature and the arch length-to-width ratio. The 3<sup>rd</sup> harmonic was positively correlated with the anterior-teeth width and the dental arch width, but was significantly negatively correlated with the anterior-teeth curvature. The 4<sup>th</sup> harmonic showed significantly low-positive correlation with the difference of radius vectors at the transitional region between the anterior and posterior teeth.

## Discussion

### 1. The contribution and cumulative contribution of maxillary dental arches

The maxillary dental arch forms could be significantly reproduced by 1<sup>st</sup> to 4<sup>th</sup> harmonics. The high

**Table 6.** Correlations of estimated items and the constant value and the amplitudes of different harmonics

Items	Constant value	Amplitudes			
		1 <sup>st</sup> amplitude	2 <sup>nd</sup> amplitude	3 <sup>rd</sup> amplitude	4 <sup>th</sup> amplitude
①	-0.1040	-0.0080	-0.2010	-0.3716**	-0.2333
②	-0.2477	0.1336	-0.7600**	0.5143**	0.0187
③	-0.2209	0.0882	-0.6207**	-0.4806**	-0.1953
④	-0.2429	0.0548	-0.6131**	-0.4601**	-0.1593
⑤	-0.1696	0.3643**	-0.8000**	-0.3428**	0.0940
⑥	0.0324	0.3146**	-0.3574**	0.1026	0.3232**
A-B	0.3731**	0.4868**	-0.5120**	-0.1168	0.0630
A-E	-0.0063	0.1957	-0.5391**	-0.3233**	-0.0063
C <sub>R</sub> -C <sub>L</sub>	0.7346**	0.4103**	0.3186**	0.4770**	0.0896
M2 <sub>R</sub> -M2 <sub>L</sub>	0.7135**	-0.0228	0.6964**	0.4162**	-0.0716

\*\* : p < 0.01

①  $\angle R + \angle L$ , ②  $(A-B)/(C_R-C_L)$ , ③  $180^\circ - \angle(C_R-A-C_L)$ , ④  $(A-E)/(C_R-C_L)$ , ⑤  $(A-B)/(M2_R-M2_L)$ , ⑥  $(r\theta_5 - r\theta_4)_R + (r\theta_5 - r\theta_4)_L$

contributions of 1<sup>st</sup> to 3<sup>rd</sup> harmonics indicated that they greatly affected the arch forms. Among them, the 2<sup>nd</sup> harmonic having highest contribution suggested that 2<sup>nd</sup>-harmonic curves were the most essential factor affecting the reproducibility of maxillary arch forms. Some previous studies concerning contributions for both deciduous and permanent dentitions have stressed that 1<sup>st</sup> to 3<sup>rd</sup> harmonics were essentials representing characters (traits) of dental arch forms, and stated that 1<sup>st</sup> to 5<sup>th</sup> harmonics inclusively reproduced the original dental arch forms (Sekimoto 1983, Sekikawa 1986, Tsuji et al. 1986, Sekimoto et al. 1988, Kasai et al. 1997). Some studies have further pointed out that 1<sup>st</sup> and 2<sup>nd</sup> harmonics acceptably reproduce the arch forms (Sekikawa 1986, Kasai et al. 1997). Because of the differences of methods to establish reference points and lines and arch-form comparison, the present results do not directly fit the previous studies, but obtained a common result that maxillary arch forms had reproducibility with lower harmonics. We also noticed that 1<sup>st</sup> to 3<sup>rd</sup> harmonics were essential factors, which represented traits for each arch form.

## 2. The average form for each dental arch form

We superimposed and compared average form with original datum (mean) of each arch form, and found

that the 1<sup>st</sup>+2<sup>nd</sup>-harmonic curve showed a higher reproducibility than only using the 1<sup>st</sup>-harmonic curve. Comparing estimated data with the constant value and amplitudes, the present results indicated that the 2<sup>nd</sup> harmonic was high-and-positively correlated with the arch width, but high-and-negatively correlated with the anterior-teeth curvature, and the arch length-to-width ratio; the relationships were also reflected in the 1<sup>st</sup>+2<sup>nd</sup>-harmonic curve of each arch form. We observed that the 1<sup>st</sup>+2<sup>nd</sup>+3<sup>rd</sup>-harmonic curves nearly fitted the original data, and indicated 1<sup>st</sup>, 2<sup>nd</sup> and 3<sup>rd</sup> harmonics essentially represented the arch form characters. Furthermore, the 1<sup>st</sup>+2<sup>nd</sup>+3<sup>rd</sup>+4<sup>th</sup>-harmonic curves showed an increase in the anterior-teeth conformity with original data, as well as reproduced each maxillary dental arch type nearly completely.

## 3. Superimposition of different average arch forms

The 1<sup>st</sup>+2<sup>nd</sup>+3<sup>rd</sup>+4<sup>th</sup>-harmonic curves for average arch forms were further superimposed for elucidating arch form traits. We observed that the square arch had a large arch width but a small anterior-teeth curvature than other types; the round-V arch is contrary to that. The round arch was characterised with a gentle transition between anterior- and posterior-teeth curves having

small ( $r_{\theta 5-r_{\theta 4}}$ ) value in the estimated item ⑥ (Table 6). The results indicated that round-square arch was the average (mostly common) maxillary dental arch.

#### 4. Comparison of the constant value and the amplitude of different arch forms

Some previous studies have pointed out that the constant value in the formula of a Fourier series represented the dental arch size, while the amplitude of a synthetic wave represented traits for the arch forms (Sekimoto 1983, Sekikawa 1986, Tsuji et al. 1986, Sekimoto et al. 1988, Kasai et al. 1997). As what have been described in the studies, curves for the 1<sup>st</sup>-harmonic waves were parabolic shapes in all arch types. Hence the 1<sup>st</sup> harmonic did not represent characters of different arch types, but indicated that the maxillary dentitions were arranged in a specific arch form. Furthermore, we found that significant differences of the 2<sup>nd</sup> harmonic between the round V-shaped arch and the square and round-square arches, of the 3<sup>rd</sup> harmonic between the square arch and other arches, and of the 4<sup>th</sup> harmonic between the square and the round-square and round arches. The four harmonics showed significant differences between arch types, and therefore considered to be factors affecting the arch form traits.

#### 5. Comparison of estimated data with the constant value and the amplitude

The comparison was performed to study the details of morphological traits, and observed that the constant value had high-and-positive correlation with width of the anterior-teeth segment and dental arch, hence the width was possibly an essential factor affecting the dental arch size. We noticed that the amplitude of the 1<sup>st</sup> harmonic was in particular positively correlated with the arch length and width of the anterior-teeth segment. The results elucidated that 1<sup>st</sup>-harmonic curves were morphologically similar in all arch types. However, no significant differences between amplitudes of

different arch types were observed, therefore low correlation coefficients in the estimated data indicated that the 1<sup>st</sup>-harmonic amplitude do not contribute to the morphological traits of any arch type. The 2<sup>nd</sup>-harmonic amplitude was high-and-positively correlated with the dental arch width, but was high-and-negatively correlated with the anterior-teeth curvature and the arch length and width. The results suggested that the 1<sup>st</sup>+2<sup>nd</sup>-harmonic curves in particular fitted with the molar segment, thus tent to represent the morphological traits for different arch forms. The 2<sup>nd</sup>-harmonic amplitude also reflected the dentition length-to-width ratio, therefore essentially determined the gross appearances of dental arches. Furthermore, we observed that the 2<sup>nd</sup>-harmonic amplitude had the most-highly contributions in all arch types (Figs. 1 and 2). A previous study has observed that the arch width-to-length ratio was the most prominent factor affecting the morphological variations of maxillary dental arches (Sekikawa 1986). The present study elucidated that 1<sup>st</sup>-harmonic curves showed distinct morphological differences with 1<sup>st</sup>+2<sup>nd</sup>-harmonic curves, but did not with the 1<sup>st</sup>+2<sup>nd</sup>+3<sup>rd</sup>- and 1<sup>st</sup>+2<sup>nd</sup>+3<sup>rd</sup>+4<sup>th</sup>-harmonic curves. The results suggested that the dental arch length-to-width ratio significantly determined the arch forms. The 3<sup>rd</sup>-harmonic amplitude was positively correlated with the width of the anterior-teeth segment and dental arch, but negatively correlated with the anterior-teeth curvature. The 1<sup>st</sup>+2<sup>nd</sup>+3<sup>rd</sup>-harmonic curves were characterised by an increase in adaptation of the anterior-teeth segment than the 1<sup>st</sup>+2<sup>nd</sup>-harmonic curves, hence the 3<sup>rd</sup>-harmonic amplitude was estimated to represent the degree of anterior-teeth curvatures. Additionally, we noticed that the 4<sup>th</sup>-harmonic amplitude was positively correlated with the difference of radius vectors. We concluded that the 1<sup>st</sup>+2<sup>nd</sup>+3<sup>rd</sup>-harmonic curves took more consideration on the reproducibility of the anterior-teeth segment than the 1<sup>st</sup>-, 1<sup>st</sup>+2<sup>nd</sup>- and 1<sup>st</sup>+2<sup>nd</sup>+3<sup>rd</sup>-harmonic curves, thus could finely tune the morphology of transitional areas (roundness affecting the

curvilinear contour of dental arches at canines) and the anterior-teeth segment. A study in the literatures analyzed 1<sup>st</sup> and 2<sup>nd</sup> harmonics and stated that the constant value, 1<sup>st</sup>-harmonic and 2<sup>nd</sup>-harmonic amplitudes represented the dentition size, arch length-to-width ratio and the squarishness of different dental arches (Sekikawa 1986). In the present study, we analysed several items, designated 1<sup>st</sup> and 2<sup>nd</sup> harmonics of a Fourier series different with other previous studies, and yet obtained a same opinion that both 1<sup>st</sup> and 2<sup>nd</sup> harmonics are factors determinative to maxillary dental arch forms.

## References

- Agata T : The basic medical statistics. Tyugaiigakusha, Tokyo. pp 127-137, 1997. (in Japanese)
- Aoki S : Medical statistics analysis reference manual. Igaku-Shoin, Tokyo. pp 237-241, 1989. (in Japanese)
- Biggerstaff RH : Three variations in dental arch form estimated by a quadratic equation. J Dent Res 51: 1509, 1972.
- Endo K, Yamamoto M : Textbook of medical statistics. Nishimura Co, Niigata. pp 37-60, 1992. (in Japanese)
- Fujisawa S : The relationship of occlusion with morphologies of palate and dental arch: Fourier analysis and analysis by index of palatal curvature. Nihon Univ J Oral Sci (Nichidai Koko Kagaku) 14: 290-301, 1988. (in Japanese)
- Funakoshi M : The key points of Fourier analysis. Iwanami Shoten, Tokyo. pp 42-73, 1989. (in Japanese)
- Iwabayashi M : A study on the dental arch form by means of curve fitting. J Stomatol Soc (Kokubyo Gakkai Zasshi) 47: 135-144, 1980. (in Japanese)
- Kan T : Textbook of multivariate analysis. Gendai-Sugakusha, Kyoto. pp 128-160, 1993. (in Japanese)
- Kasai K, Kanazawa E, Aboshi H, Richards LC, Matsuno M : Dental arch form in three Pacific populations: a comparison with Japanese and Australian aboriginal samples. J Nihon Univ Sch Dent 39: 196-201, 1997.
- Kashiwagi S : Study on radiological morphology of the mandibular fossa: analysis of the female's mandibular fossa using Fourier progression. J Kyushu Dent Soc (Kyushu Shikagakkai Zasshi) 31: 125-153, 1977. (in Japanese)
- Katahira K : Textbook of statistics. New rev ed. Kiri syoboh CORP., Tokyo. pp 108-117, 1999. (in Japanese)
- Katayama H : Morphological study of occlusion, dental arch and palate. J Tokyo Dent College Soc (Shikwa Gakuho) 58 (Suppl.): 1-21, 1958. (in Japanese)
- Kawata T : Applied statistics series -Fourier analysis and statistics-. Kyoritsu shuppan Co., Tokyo. pp 12-40, 1985. (in Japanese)
- Lestrel PE, Takahashi O, Kanazawa E : A quantitative approach for measuring crowding in the dental arch: Fourier descriptors. Am J Orthod Dentofacial Orthop 125: 716-725, 2004.
- Nakatsuka M, Kumabe S, Iwai Y, Kim GS, Fujiwara S : Classification of maxillary dental arches by correlation and principal component analyses. J Osaka Odontol Soc (Shika Igaku) 67: 225-234, 2004. (in Japanese)
- Ohba T, Kashiwagi S, Takei C : Analysis of a curved line by Fourier progression: its application to morphology of the mandibular Fossa. Dental Radiology (Shikahousyasen) 16: 225-234, 1976. (in Japanese)
- Oishi S : The Fourier analysis. Iwanami Shoten, Tokyo. pp 36-61, 1989. (in Japanese)
- Okuda C : The learning of statistics for medical researchers. Kinpodo Inc., Kyoto. pp 106-115, 1999. (in Japanese)
- Okumura T : Dental anatomy. Shikwa Gakuho Sha, Tokyo. pp 278-281, 1924. (in Japanese)
- Ozaki T, Kamiakito Y, Suzuki T, Takagi H, Hoshino K, Suzuki M : A topographic analysis of contour line of the tooth (Fourier analysis) Part 1: upper first molar. Jpn J Oral Biol (Shika Kiso Igakkai Zasshi) 19: 554-560, 1977. (in Japanese)
- Sakai T : On the form of dental arch and the relations of various parts of dental arch in the Japanese. Shinshu Med J (Shinshu Igaku Zasshi) 4: 332-337, 1955. (in Japanese)
- Sekikawa M : Fourier analysis of the dental arch form. Jpn J Oral Biol (Shika Kiso Igakkai Zasshi) 28: 43-61, 1986. (in Japanese)
- Sekimoto T : A morphological study on the deciduous dentition using Fourier analysis -the size and shape of coronal and basal arches-. Odontology, J Nippon Dent College Soc (Shigaku) 70: 849-868, 1983. (in Japanese)
- Sekimoto T, Tsuji H, Kawamata J, Hamaji H, Mizorogi E, Iwabuchi N, Uwabo K, Miura M, Hagiwara Y, Sakai M :

- A morphological study on the dentition using Fourier analysis- The relationship between deciduous dentition and permanent dentition- Part II comparison between normal occlusion and malocclusion. *Jpn J Pedodont (Shoni Shikagaku Zasshi)* 26: 146-153, 1988. (in Japanese)
- Soma K, Hatate M : Consideration of the cephalometric data analysis applied to the Fourier series. *J Stomatol Soc (Kokubyo Gakkai Zasshi)* 47: 135-144, 1980. (in Japanese)
- Thompson AH, Dewey M : The teeth of the higher apes and man. *Comparative dental anatomy*. 2<sup>nd</sup> ed. CV Mosby, St. Louis, pp 182-204, 1915.
- Tsuji H, Kawamata J, Hamaji H, Mizorogi E, Uwabo K, Iwabuchi N, Inoue T, Hagiwara Y, Sekimoto T, Sakai M : A morphological study on the dentition using Fourier analysis -the relationship between deciduous dentition and permanent dentition-. *Jpn J Pedodont (Shoni Shikagaku Zasshi)* 24: 733-741, 1986. (in Japanese)
- Uchida O : Textbook of multivariate analysis by means of the Excel. Tokyo Tosho, Tokyo. pp 135-166, 1997. (in Japanese)
- Yamazaki K : A study on the dental arch form of Japanese. *JNDA (Nippon Shikagakkai Zasshi)* 27: 74-89, 1934. (in Japanese)

## 푸리에 급수를 이용한 사람 위이틀활의 분석

나카츠카 미치코, 쓰지바야시 토오루<sup>1</sup>, 쿠마베 순지,  
주성숙<sup>2</sup>, 신제원<sup>2</sup>, 이와이 야스토모  
일본 오사카치과대학 구강해부학교실,  
<sup>1</sup>일본 오사카치과대학 물리학교실,  
<sup>2</sup>경희대학교 치과대학 구강해부학교실

---

**간추림** : 사람 위이틀활의 기준점, 기준선, 기준각을 이용한 연구를 통하여 전치부의 형태와 이틀활의 형태 사이에 유의한 관계가 있음을 알게 되었다. 이에 사람 위이틀활 형태 결정에 영향을 미치는 필수요소들 사이의 관계를 밝히기 위하여 사람 위이틀활 모델 62개의 형태를 푸리에 급수를 사용하여 비교 검토하였다.

푸리에 급수의 상수 및 제 1 주파수의 진폭은 각 형태간에 통계적으로 유의성 있는 차이를 관찰할 수 없었지만 제 2 주파수에서 제 4 주파수까지의 진폭에서는 각 형태간에 유의성 있는 차이를 관찰할 수 있었다. 또한 상수는 앞니부분의 폭경, 이틀활의 폭경 및 이틀활의 길이와 각각 정비례 관계를 보였다.

이상의 결과로 보아, 사람 위이틀활의 형태는 앞니부분으로부터 어금니부분으로의 이행부의 형태가 관여하고 있는 것으로 생각된다.

---

**찾아보기 낱말** : 푸리에 급수, 위이틀활