

- -

# A Study of Design Process after Hospital Design Competitions

- focused on the case study of current hospital design competitions -

\* , \*\*  
Lee Hae-Won, Lee Jung-Man

-----

## ABSTRACT

As one designs a building, one should have to consider its characters and functions according to its own use. Recently many professional buildings used to be designed by specialized design firms with their own experience and specialty to vitalize the functions of the buildings. Especially the design of the hospital is really needed more concern from the beginning of design ordering because it is pursuing the most specialty in architectural designs and therefore it can not be managed with general architects.

The purpose of this study is to present the references for reasonable promotions of hospital design in the future with the analysis of the suitability in hospital design ordering and the process after design competition in Korea.

-----

Keywords : hospital, competition, ordering formality, design alteration

-----

1 1-2. 5  
1-1. . 1  
2  
가 . 3  
가  
가 . 4  
가 , 가 가 가 . 5  
가 가 .  
1-3.  
2  
2-1. ( )가

\* ,  
\*\* ,

1) : 가

2) ( ) : 가  
가 : , ,

가 ,  
가 : 가  
가 , ,  
가  
가

3) ? (Turn-Key base contract ) :

가 , , ,  
가

4) (Pre Qualification) :

가 , , , )

2-2.

가 , , , 가  
가 , , , 가  
가 ? ,

2-2-1.

“ ” ( ,3)

( ) 2

1).

2-2-2.

가  
가 ,  
가  
가

2-2-3.

< 1> 2)

	UIA	KIA
	(Project Competition) (Idea Competition)	
1	(Single State Competition)	1
2	(Two State Competition)	2
	(Open Competition) (Limited Competition) (Special Competition)	

2-3.

2-3-1.

가

가 .

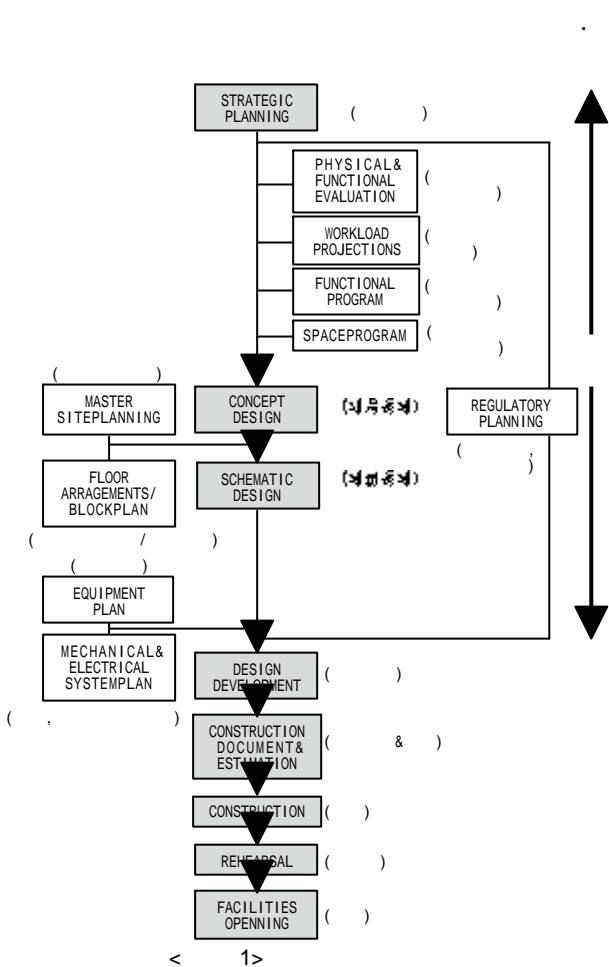
1) , 1998 - 43 ?

? , 1998. 2.19.

2) , , 1992.

3) , , 1999.

2-3-2.



가  
가  
가

2-4.

가  
3  
3-1.  
가  
3-1-1.  
1997 JJ, 1998  
HS, 1999  
EJ JJ HS 가  
JJ EJ  
HS (P.Q) + EJ

< 3 >

	(Bed)		
JJ	320	1997. 4. 29	1998. 5. 12
HS	300	1998. 6. 8	1999. 4.
EJ	1,000	1999. 6. 12	2001. 4. 20

3-1-2.  
3

3-1-3.

3-2.

가

3-2-1. JJ

1)

1, 4 2 ,  
4 1 .

가

1

1 2  
900 가 .

2

/ 가 1 가 . 가 가

가

가

가

< 4> JJ

	1 4 - 13 11	
	52,739㎡ (15,955 )	
	: 1 / 4 : 1 / 1	: 2 / 4 : 1 / 1
	5,216㎡ (1,578 )	6,036.33㎡ (1,826 )
	21,342㎡ (6,456 )	24,967.90㎡ (7,553 )
	9.8 %	11.45 %
	29.3 %	31.87 %
	317	319
	192 ( 178 ) ( :171 / :21 )	217 ( 188 ) ( :166 / :51 )

< 5> JJ

	2		5		
	16	34.8	30	65.2	46
	8	15.1	45	84.9	53
	22	42.3	30	47.7	52
	0	0	10	100.0	50

2)

(1)

( )

30m

( )

2 가 44 2

가

가

2

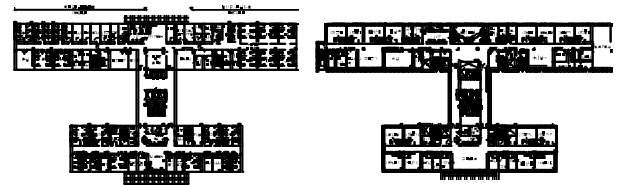
가



( )

( )

< 2> JJ



( )

( )

< 3> JJ

(3) ,

(2)

/

가 THK16

THK24

3-2-2. HS

1)

(P.Q)  
(P.Q)

< 6> HS

	98 - 104	572 - 3
	33,057㎡ (10,000 )	16,216.1㎡ (4,905.35 )
	1 / 5	2 / 5
	3,584㎡ (1,084 )	3,014㎡ (912 )
	15,213㎡ (4,602 )	14,886㎡ (4,503 )
	11.0 %	29.7 %
	36.0 %	81.4 %
	300 ( 200, 100)	200 ( , )

2)

(1)

가  
HS  
가 HS

)

200

300



( ) ( )

< 4> HS

(2)

6.0m 6.3m  
가 가  
가 1  
가

3 5 300 200  
가 5  
가

66 50 2  
N.S 1  
가 가

가

< 7>

	1		2		5		
	(Bed)	(%)	(Bed)	(%)	(Bed)	(%)	
	5	10.0	10	20.0	35	70.0	50
	4	6.1	2	3.0	60	90.9	66

(3) /

가 , 가

가

가  
가 1

2  
가

3-2-3. EJ

1)

가

2)

(1)

가

< 8> EJ

1306	
21,546.70㎡ (6,517.88 )	
4 / 13	4 / 15
6,694㎡ (2,024.93 )	8,196.44㎡ (2,479.42 )
103,397㎡ (31,280 )	91,741.25㎡ (27,751.73 )
31.06 %	38.04 %
271.67 %	224.03 %
: 1,000	: 946
: 52	: 62
: 45	: 45
983 (* :807 ) ( :130 / :853 )	638 (* :483 ) ( :23 / :615 )



( )



( )

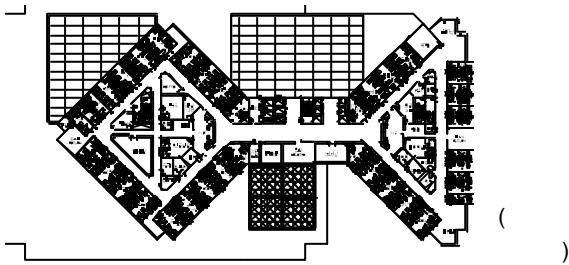
< 5> EJ

(2)

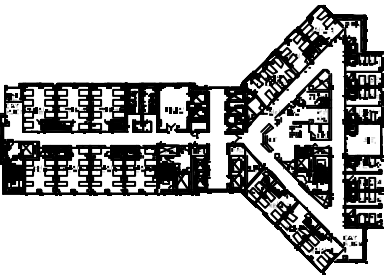
1-3 5

4 /

( )가 5 4



( )



( )

< 6> EJ

가 7 13 7 3 4 1,000  
 , 1 100 가  
 700 300  
 15 10 가 1 100 6  
 1 3 7 ( 가  
 , 1 92 )

< 9> EJ

	1	2	4	6	7	8							
	2	2	6	6	8	8	84	84	-	-	-	-	100
	2	2	14	15	20	22	6	7	42	46	8	9	92

3-3.

가 ,

3-3-1.

1)

JJ , HS 1  
 가 EJ 가 ,  
 JJ / , HS 1  
 가 . EJ  
 가

92 165 3  
 3 가

2)



가 2) HS

가 300 200  
1,129m<sup>2</sup>(341 )

< 13> EJ

B4		-
B3		
B2		
B1		
1		
2	( )	/
3	( ,Minor )	
4	/ ( )	
5	( )	(44B)
6		(92B)
7~13	( 165B)	(92B)
13~15		(92B, 15 74B)

가

3) EJ

가

3-4.

3-4-1.

가

가

3-3-3.

JJ

< 14> : m<sup>2</sup>( )

	JJ	HS	EJ
	+2,823(+854)	- 1,129(+342)	+355( +107)
	- 2,028( - 614)	- 21( - 6)	- 4,387( - 1,327)
	- 733( - 222)	- 76( - 23)	- 3,349( - 1,013)
	+155( +47)	+1,824(+552)	- 138( - 42)
	- 811( - 245)	- 217( - 66)	+1,470( +445)
	+2,839(+859)	+140( +59)	- 3,245( - 982)
	+1,673(+506)	+41( +12)	- 3,523( - 1,009)
	+1,078(+326)	+562(+186)	- 12,818( - 3,877)

300

200

HS

가

100

가

EJ

가

가

가

3-4-2.

가

1) JJ

JJ

가가 가

HS

300

/

가

가

EJ

가

2,823m<sup>2</sup>(854 )

2,028m<sup>2</sup>(613 )

3-4-3.



. HS

가

가

100

200

. EJ

1,000

946

가

가

가

가

1) JJ - ( )

가

가

2) HS - ( )

가

4-3-2. HS

3) EJ - ( )  
가

(P.Q)  
(P.Q)

가

가

가

가

가

가

4-3.

4-3-1

JJ

HS

가

EJ

JJ

EJ

가

, HS

(P.Q) + Pre Proposal(P.P)

EJ

< 17 >

	JJ	HS	EJ
		PreProposal(P.P) + (P.Q)+ 가	
		HS	EJ EJ
	200 <sup>5</sup>	-	500 <sup>10</sup>

-2

가

-2

2가

가

4-3-2. JJ

4-3-3. EJ

가



6. , 1994
- JJ HS 가 - , , 1994
- EJ , - , (1)-
- JJ EJ P.Q + P.P - , 1993
- , HS - , (2)-
- EJ 1993 - , 1993.
- 1) - , 1992.
1983. - ,
- 가 - , 1982.
- 2) - JJ , HS , EJ
- JJ , HS , EJ
- 3) - ,
- JJ , HS , EJ
- , 1999
- , 1999. 8
- , 1999.
- , 1, 1998. 8.
- , 1998
- ; , 1998.
- , 1997
- , 1996.
- ,