



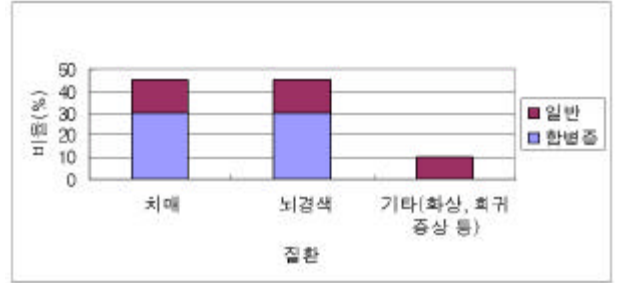


3.

YS	4	-	2,432m <sup>2</sup>	130	
YH	5	3000	4500	450	
KD	1 4	4,919m <sup>2</sup>	1,329m <sup>2</sup>	259	
CJ	1 8	16,905 m <sup>2</sup>	8,283m <sup>2</sup>	220	

3.2  
3.2.1

45% 90% 가 60%가 가



1.

3.2.3

가

가

4.

			N.S		
YS	130	22~44	4	92.3%	가
YH	450	80	5	84.6%	가
KD	259	75	3	87.3%	
CJ	220	40~42	5	83.4%	

1)

가

, 가

2)

가

가

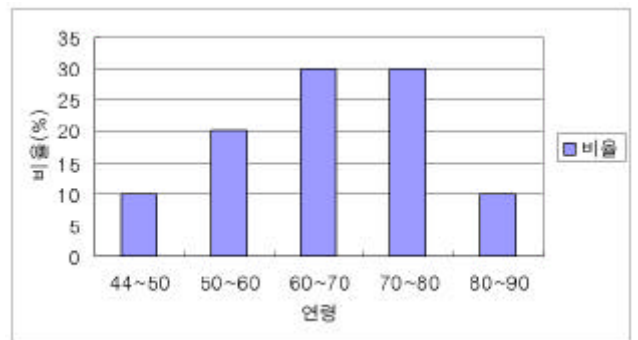
6 70 7

80

가

5.

YS	(3 <sup>6</sup> )	2	30	가 2/3	
YH	(5 <sup>10-15</sup> )	1	(100 <sup>3-4</sup> )		
KD	(3 <sup>7</sup> )	12	70		
CJ	(5 <sup>6</sup> )	4 <sup>3</sup> <sub>5</sub>	75		
	N.S	N.S		가	



2.

3.2.2

60

97%

. < 1>

가

가

3)

6.

YS	130	11		
YH	450	22		
KD	259	20		
CJ	220	15		

4)

3

가

6

12

가  
가



3.

3.3

3.3.1

가

가

가

가

가

2

7

	( )		( 가)			
YS						
YH						
KD						
CJ						

: 1 : 1 :

1)

2)

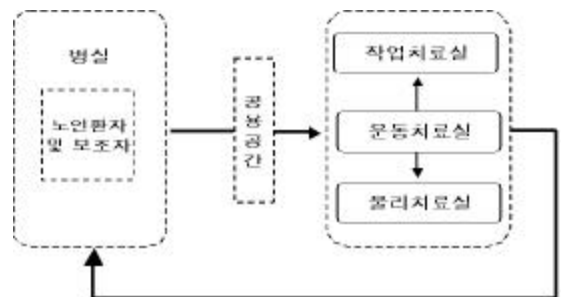
3.3.2

1)

:

:

:

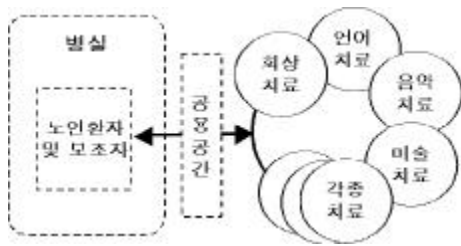


4.

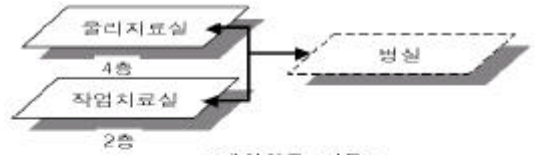
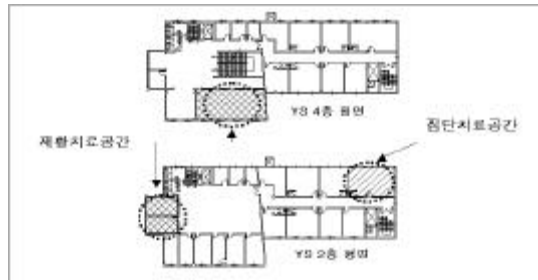
2) ( ' )  
가

가 ,

( )



5



<재활치료 이동>



<집단치료 이동>

7. YS

3.4

3.4.1



< > < > < >

6.

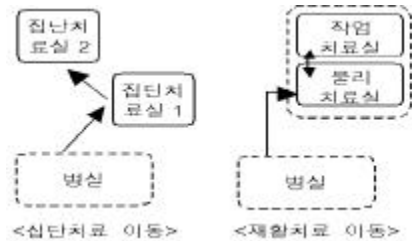
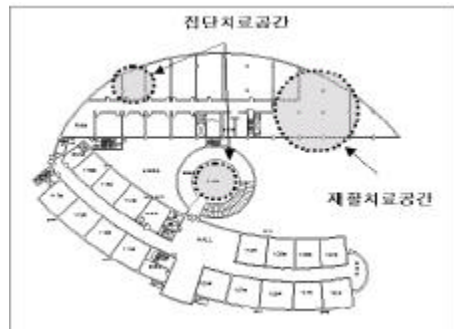
가

가

3.4.2

가

가



8. YH

1) YS

YS

, 2

4

3) KD

1

가

2

1



8.

		(m)				1
YS	‘ ,	2	17	40	24.4	26.71
		3	17	40	24.4	
	‘ ,	4	20	45	31.33	37.71
		2	28	51	35.4	
YH	‘ ,	1	55	81	71.69	70.46
		2	55	73	65.55	
		3	55	81	71.69	
		4	55	81	71.69	
		5	55	81	71.69	
	‘ ,	1	49	77	68.94	67.35
		2	49	55	61	
		3	49	77	68.94	
		4	49	61.5	68.94	
KD	‘ ,	2	29	71	59.7	59.7
		3	29	71	59.7	
		4	29	71	59.7	
	‘ ,	2	42	58	44.1	44.1
CJ	‘ ,	4	21	43	35.5	37.07
		5	29	45	37.6	
		6	29	45	37.6	
		7	29	45	37.6	
	‘ ,	4	28	34	31	31.1
		5	26	36	31.14	
		6	26	36	31.14	
		7	26	36	31.14	

( ) - : 1 : 1 : 2

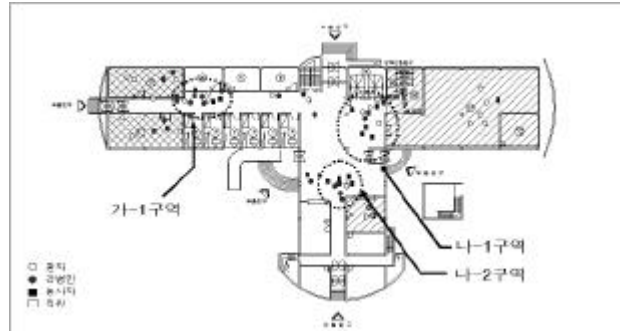


16. YS

CJ

‘가-1’

‘ ’-1 ‘ ’-2  
( ‘ ’-1: , ‘ ’-2: )



17. KD

YS : -

3.6

YH : -

3.6.1

KD : -

1)

(1,2)

(4,5,6,8)

CJ : -

, 4 6

가

가

4

6

3.5.3

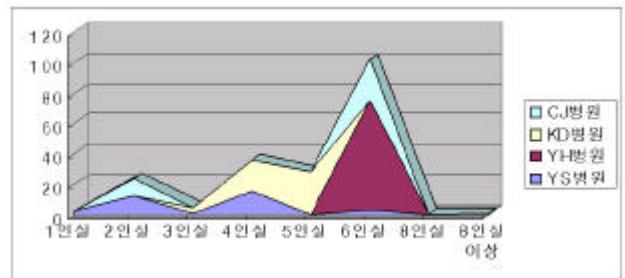
YS

가-1

, 가-2

-1  
가

가



18.

2) YH, KD CH YH, KD

9.

	YS	YH	KD	CH
		-		-
	-	-	-	
	-	-	-	-
	-	-	-	
	-	-		

2) ( , 가 , ) YH KD

YH

10.

가	YS	YH	KD	CJ
.	-	-	-	-
.				
.	-		-	-

3.6.2

11.

YS												4	476m <sup>2</sup>
YH												5	151m <sup>2</sup>
KD												6	263m <sup>2</sup>
CJ												5	306m <sup>2</sup>

3.6.3

1)

12.

YS	-		
YH	-		
KD	-		
CJ	-		

2)

YS CJ

3)

가

가

4)

YS 2

가

YH, KD, CJ

가

가

4

4.1

4.1.1

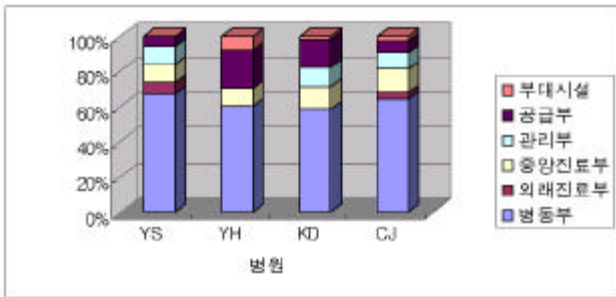
1)

200

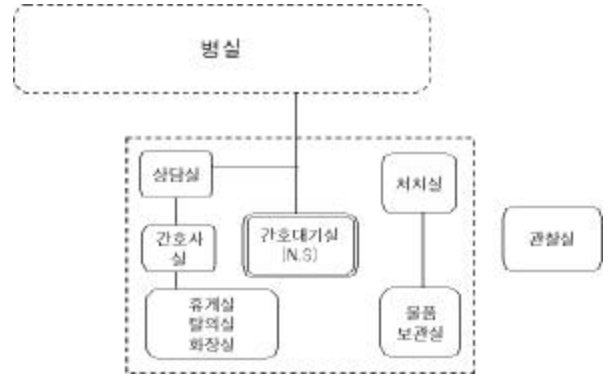
(500 ) : 83m<sup>2</sup>, (500 ) : 89  
 m<sup>2</sup>, (507 ) : 69.5m<sup>2</sup> 1  
 가 38m<sup>2</sup>

2)

가



19.



20.

4.1.2

1)

4.2.2

가

2)

가

, 가

4.2

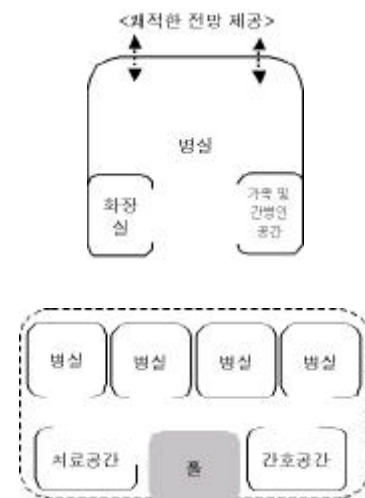
4.2.1

(N.S.) :

가

가

가



21.

가

가

1)

가

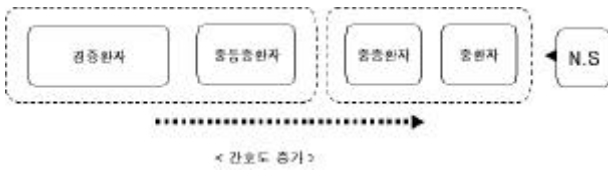


22.

2)

가

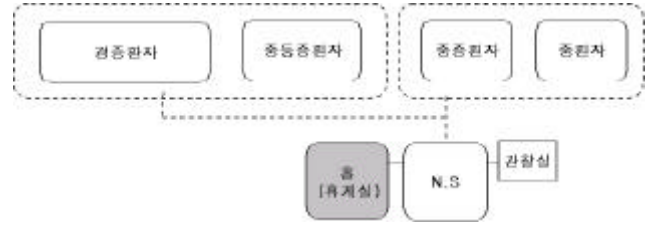
가



23.

3) 가

가

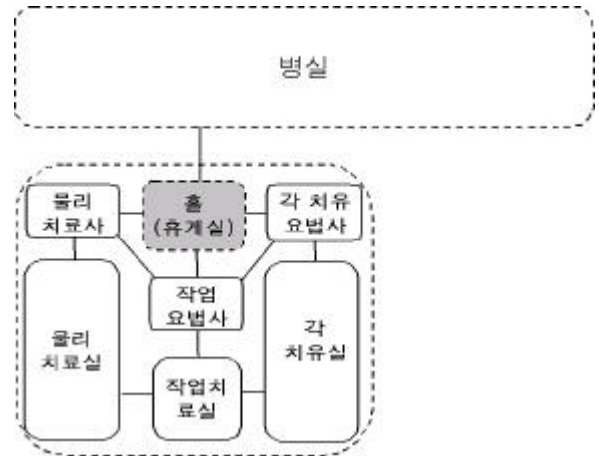


24.

4.2.3

가

가

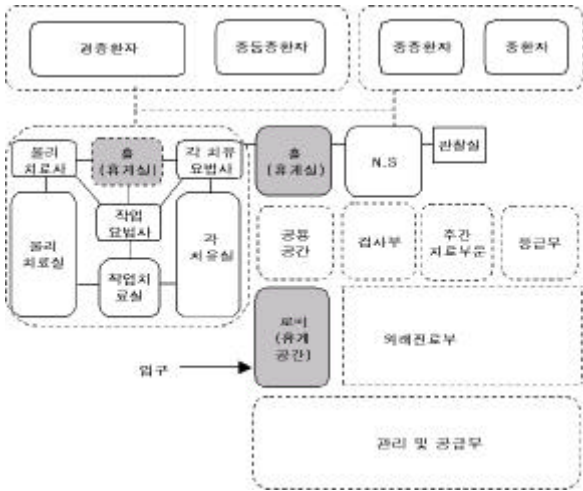


25.

4.3

가

가



26.

가

5

1)

가  
가

1. , 1996
2. , 1999
3. , 1988
4. ( ), 1992
5. , 1996
6. , 1998
7. , 1994
8. , + , 1995
9. ( ), 1997
10. Geoffrey Salmon, Caring Environments for Frail Elderly People, 1993
11. <http://www.mohw.go.kr/hp/owa/ha000.a000>
12. Joseph G. Ouslander, Dan Osterweil, John Morley, Medical Care in the Nursing Home, R.R Donnelley & Sons Company
13. Stephen Verderber, David J Fine, Healthcare Architecture, Yale University Press New Haven and London, 2000
14. Victor Regnier, Aia, Assisted living Housing for The Elderly, Van Nostrand Reinhold, 1994

, N.S

2)