

A Study on the Data Structure System for the Architectural Planning in ward of General Hospital

*

Kim, Khil-Chae

Abstract

The purpose of this study is to suggest the data Structure System for the architectural planning in ward of general hospital. The important result and advantage of the system such as HcCad-System for design and plan of wards are as follows; At first, the system useful for communication medium and instructional tool for ward planners and designers. Secondly, fast and economical evaluation are obtained through the study of experimental simulation. Finally as a new tool in architectural field, system helps to enhance the relationship between computer and human.

: , , CAD,

1.

가

가

1.1

가가

(Knowledge-Base) 가

(Expert System)

1.2

가

가

가

CAD

(Computer Aided Design)

, 가

*

2001

(HcCAD-System)

3

가

가

2.1

HcCAD-System

가

가

가

가

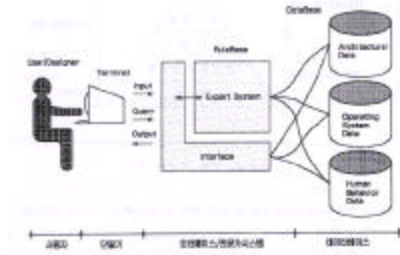
가

3

가

(1).

가



CAD

1. HcCad- system

2.2

1)

가

3가

가)

(Architectural database)

가

가

)

(Operationg system database)

,

가

)

(Human Behavior database)

,

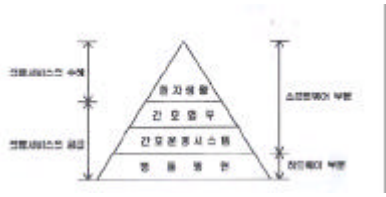
< 2>

HcCAD-System

2.

가

(object oriented database)



2.

(Object) (geographic data) HcCAD-System 20

가

HcCAD-System

2.3 가

1) 가

가

(input process), 가 (evaluation process) (reference process)

가)

(input process)

CAD

HcCAD-System

가 CAD

가

CAD

dsn

가

CAD

(import)

(export)가 가

(dwg)

가

가

HcCAD-System

dsn

(object)가

HcCAD-System

가

가

가

2)

HcCAD-System

(relational database)

NS(), NC(), TCC(

) ACC() (/
(link) . (, m²/),
(/ , m²/m²)
) (reference process)

가
가
) 가 (evaluation process) . 가 가
가
가
가
가
가
가
가
가

3. 가

가 , 가
가
3.1
Microsofte
Windows 95/ Windows NT
Microsofte Visual
C/C++ 5.0
3.2
가
가 1

(
, m²/),

1

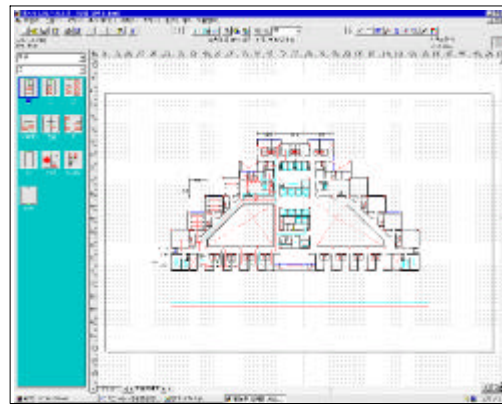
Helicycle	.exe	
Mfc42l	.dll	Microsoft
Msvrt	.dll	
Mfc42loc	.dll	
Estbox32	.dll	HC
Panton32	.dll	
Kspin32	.dll	
Isgdi32	.dll	

(Library area)

3.3

HC Graphic Drawing Program

- 1) , , , , ,
- 2) (solid color), (gradient), (pattern), (vector pattern), (hatch)
- 3) multi page / multi layer
- 4) undo / undo list / style
- 5) combine / group / array
- 6) 가 (clipart)

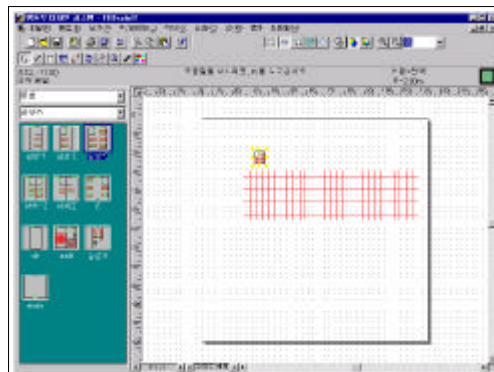


3. HcCAD-System

4. 가 가

4.1

- 1) CAD 가



4. HcCAD-System

3 HcCAD-System (drawing area)

4

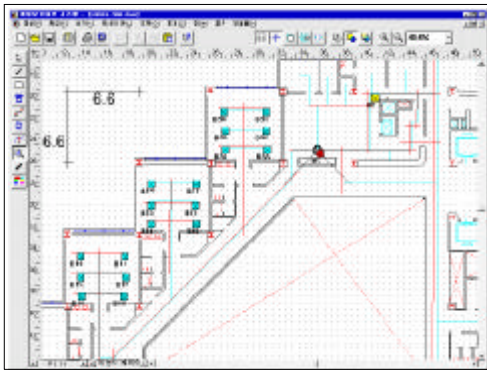
HcCAD-System

(import)

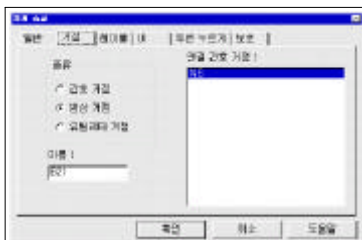
2)

가가

5



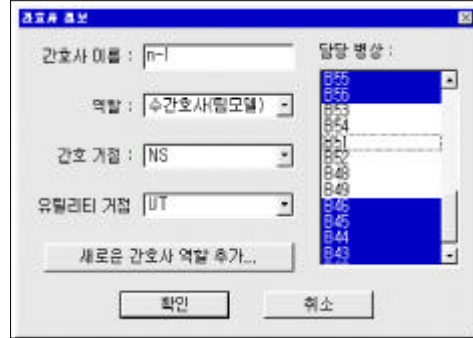
5.



6.

6

가



7.

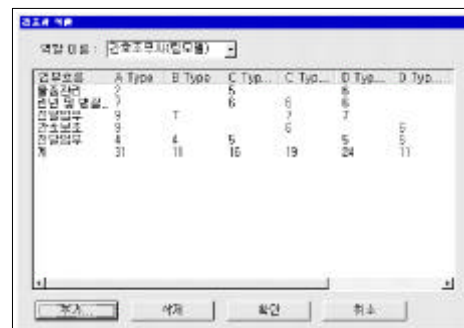


8.

7

8

가



9

HC

가 가



12 가 (I)

4.2 가

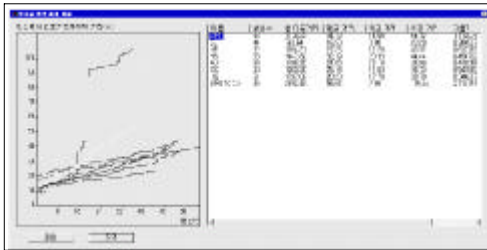
가 가

가

HC



13 가 (II)



10.

가

대분류	중분류	면적(㎡)	면적	소계
환자공간	병실	400.0		541.33
	공용회합실/욕실	100.0		
	대리실	41.33		
간호공간	간호관계대실	200.0		257.0
	의국	57.0		
이동공간	복도공간	400.0		488.47
	거터	88.47		
총계				1285.80

14



11

가

15 가

5.

(HcCAD-System)

1)

가

10

가가 가

2) 가

3) 가

4) 가

5) , ,

가 가

1) , 가

, 1997

2) , , 1989

3) , , 1993